

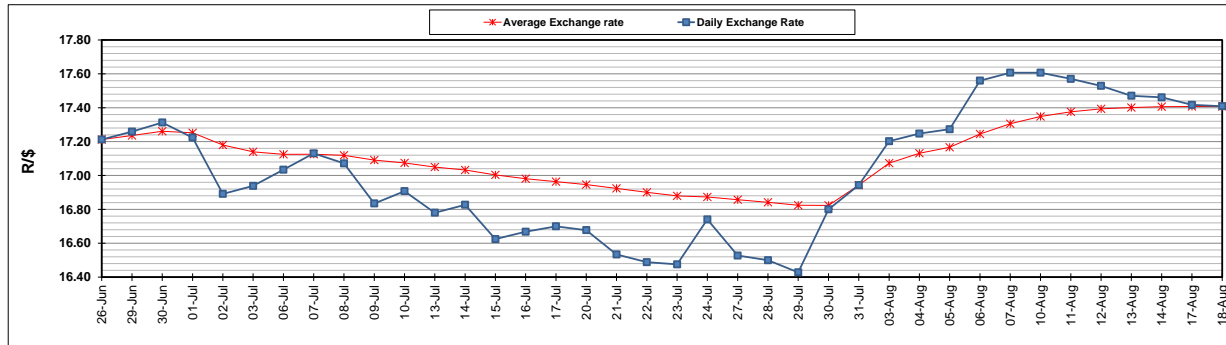
	PETROL 95 ULP	PETROL 93 ULP & LRP	DIESEL 0.05%	DIESEL 0.005%	ILL. PAR.
GAUTENG PUMP PRICE (SA c/l) AS FROM 05/08/2020	1,517.000	1,488.000	-	-	-
WHOLESALE PRICE (SA c/l) AS FROM 05/08/2020	-	-	1,348.560	1,352.960	742.828
SINGLE NATIONAL MAXIMUM RETAIL PRICE	-	-	-	-	934.000
BASIC FUEL PRICE - 18/08/2020 (SA c/l)	582.789	573.489	577.202	582.254	509.802
PRESS RELEASE CONTRIBUTION TO BFP 05/08/2020 - 18/08/2020 (SA c/l)	569.770	550.770	597.630	602.030	538.128
UNIT OVER/(UNDER) RECOVERY - 18/08/2020 (SA c/l)	(13.019)	(22.719)	20.428	19.776	28.326
AVERAGE BASIC FUEL PRICE 31/07/2020 - 18/08/2020	562.678	552.919	577.905	582.238	514.386
AVERAGE UNIT OVER/(UNDER) RECOVERY 31/07/2020 - 18/08/2020	5.938	(3.303)	9.341	9.407	14.742

ANALYSIS MOVEMENT OF AVERAGE OVER/(UNDER) RECOVERY

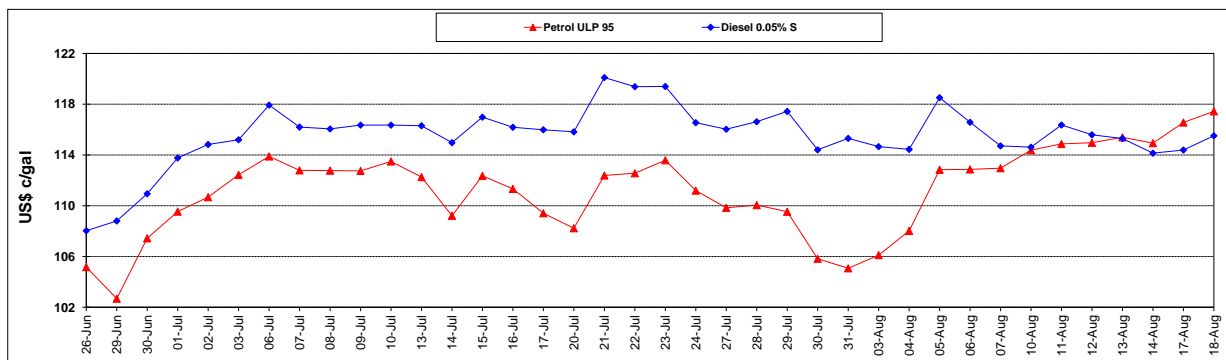
	PETROL 95	PETROL 93	DIESEL 0.05%	DIESEL 0.005%	ILL. PAR.
- MOVEMENT IN INTERNATIONAL PRODUCT PRICES	24.818	15.250	28.731	28.944	32.002
- MOVEMENT IN EXCHANGE RATE	(18.880)	(18.553)	(19.391)	(19.537)	(17.260)
AVERAGE UNIT OVER/(UNDER) RECOVERY 31/07/2020 - 18/08/2020	5.938	(3.303)	9.341	9.407	14.742

R/\$ EXCHANGE RATE - (R/\$17.4090 - 18/08/2020)

EXCHANGE RATE USED IN BASIC FUEL PRICE



INTERNATIONAL PRODUCT PRICES OF BASKET USED IN BASIC FUEL PRICE



BASIC FUEL PRICE IN SA CENTS PER LITRE

